



INTACT  
*life* |||

Relocatable office partitions





## INTACT Life

### Light, space, transparency

With over 50 years' experience, INTACT Life, a Belgian company ideally located in the heart of Europe, designs, develops and manufactures its own Demountable and Relocatable partitioning system which is used throughout the world.

The elegant and smart design of INTACT Life partitions offers a total aesthetic freedom and endless possibilities of combinations. Its unique concept based on compatible profiles matching the original structure ensures the technical integrity of the system in its most exclusive versions. The strict control of raw material supply, in accordance with most demanding international standards, guarantees the quality of the final product in its most audacious applications. INTACT Life partitioning system provides to the designer a unique base for permanent innovation in space dividing solution with the insurance of technically sound characteristics. Whether for commercial, administrative, industrial work places or airport, schools or showrooms, its applications are infinite.

In terms of services, INTACT Life provides the full sequence from project design, quantities calculation, supply of all components ex works or on site, to after sales services.

INTACT Life exports overseas over 60% of its production through a wide network of distributors. Main markets are EEC (mainly Switzerland, France), India, Gulf countries and Africa. INTACT Life just opened an office in Dubai, U.A.E and has one in Bangalore, India, INTACT Interior PVT LTD.

#### EUROPE

INTACT LIFE SA  
Rue de la Wastinne 24 • B-1301 Wavre • Belgium  
Phone Number: +32 (0)2 366 06 56

#### U.A.E

INTACT LIFE FZE  
P.O. BOX 16766  
JAFZA, Dubai, U.A.E.  
Phone Number: +971 4 8886224

#### INDIA

INTACT Interiors PVT LTD  
1st Floor, Number 2, 7th Main, 80ft Road, 1st Block,  
Koramangala,  
BANGALORE -560 034, Karnataka, India  
Phone Number: +91 80 414 68558

**INTACT**  
*life*

Relocatable office partitions

[www.intactlife.net](http://www.intactlife.net)



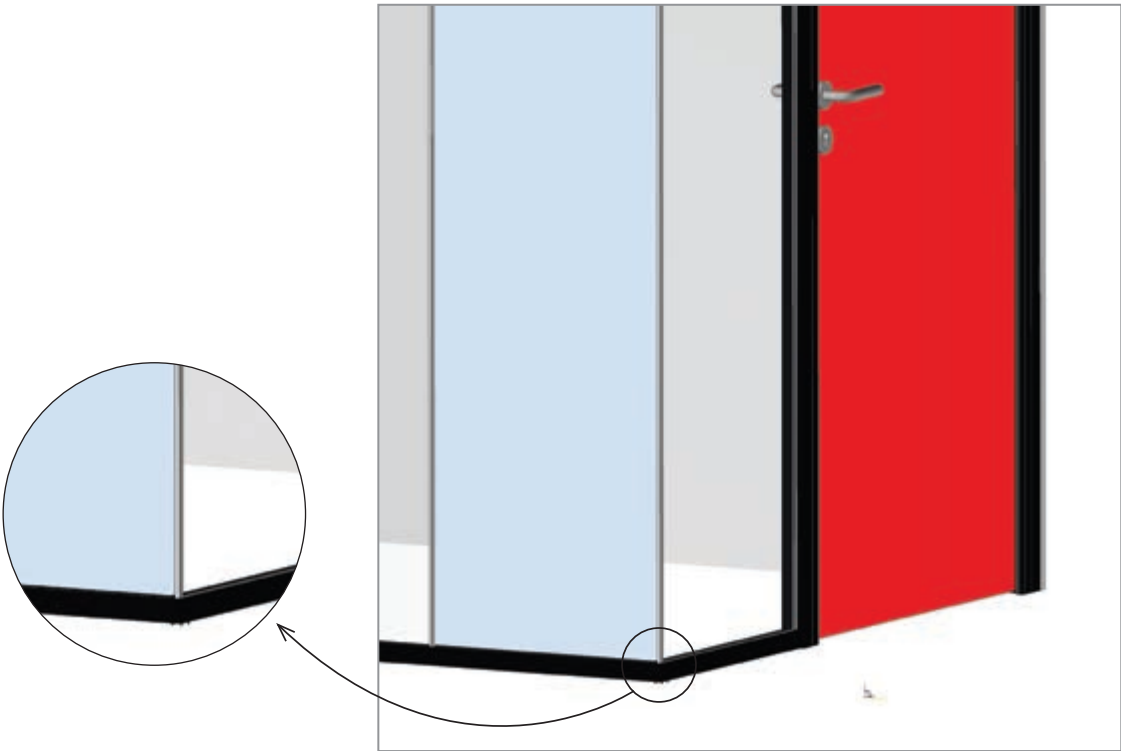
# PARTITIONS





# CRYSTAL 38 PARTITION

## CRYSTAL 38 SG - Single Glass



### TECHNICAL DATA

Dimensions	
Profile set section	38 mm x 38 mm
Glass thickness	10 mm or 12 mm
Height	3000 mm (maxi)
Module width	600 to 1200 mm (recommended)
Materials	
Tracks	aluminium mill finish with cap anodized or RAL painted
Glass	tempered or laminated
T-section & corner	Transparent polycarbonate material
Door shutter	any size, solid core 40mm, aluframed glass or frameless tempered glass
Door system	hinges or sliding or spring pivot

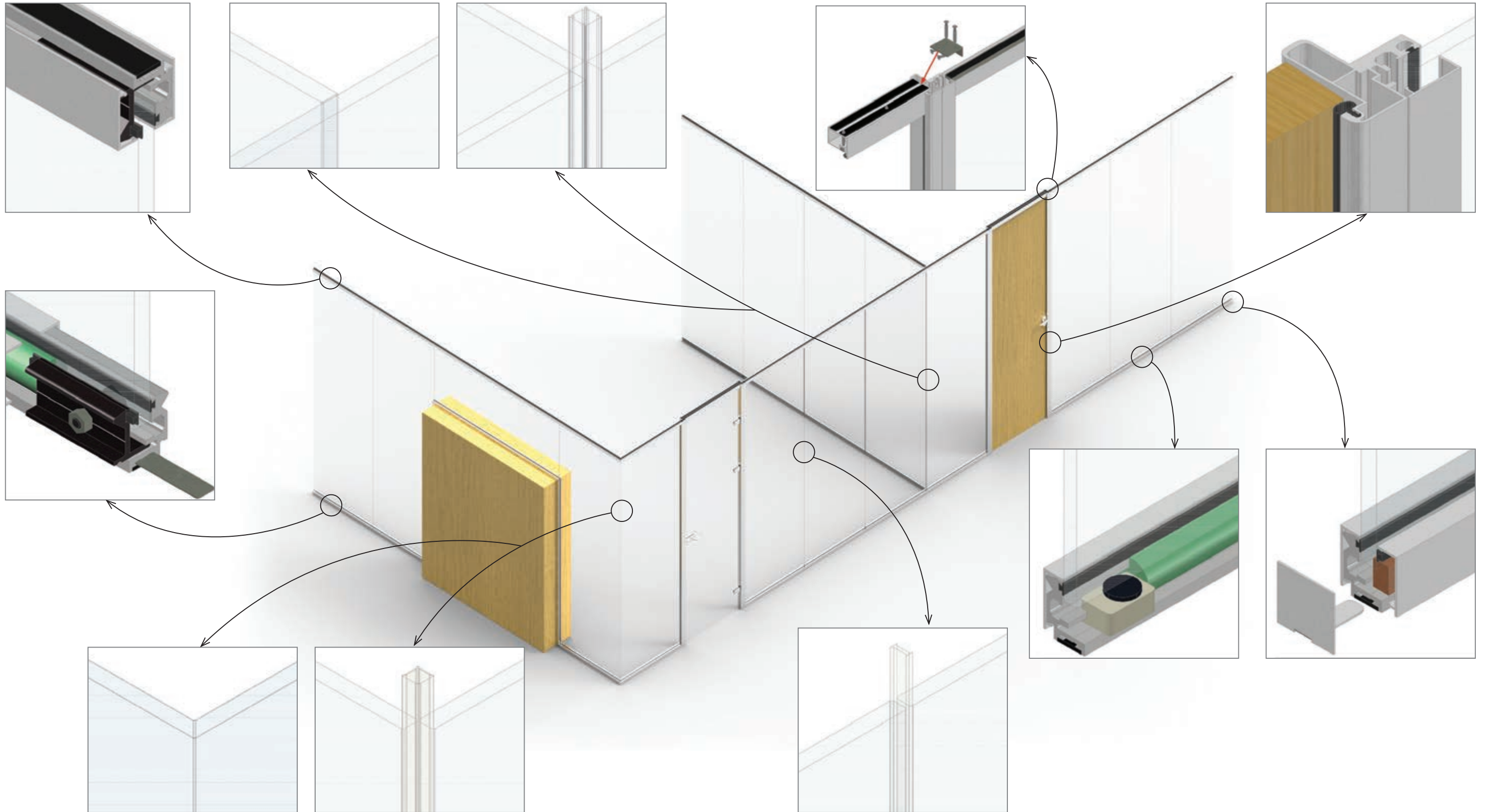


The Crystal 38SG partition is an 38mm single glass profile designed to enhance the transparency and clarity of the glass. This design brings lightness and brightness in a space while remaining a resistant and long-lasting partition. This partition is fully demountable and relocatable.



## PARTITION LAYOUT

Junctions T - Perpendiculars



Junctions L - Corners

Junctions H - Between glass



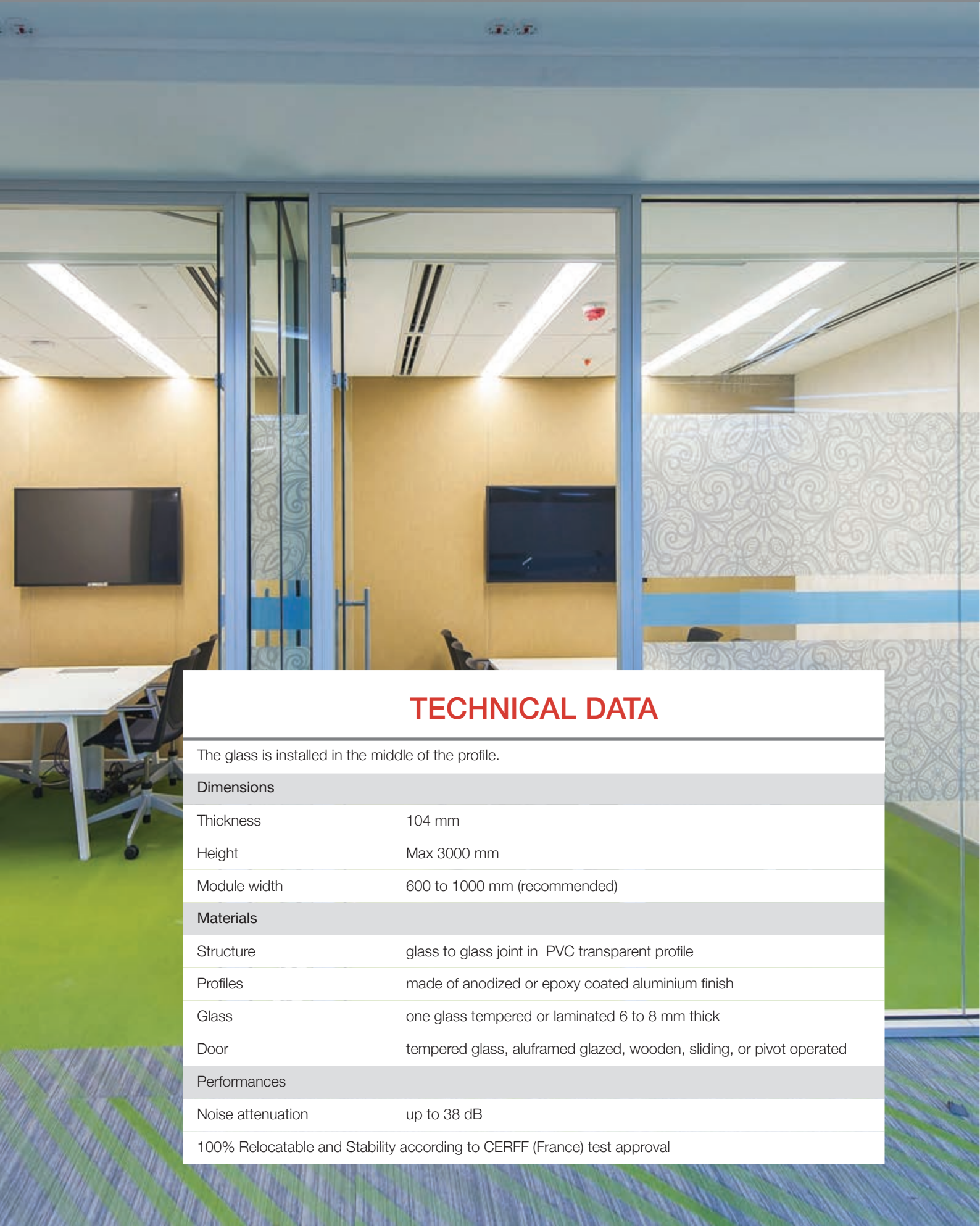
# INTACT 95 PARTITION

The INTACT 95 is a partition system with a wide range of materials combination. It allows to integrate glass into single or double glazed system or solid panels such as Gypsum board, MDF, chip board or wooden veneer finish or any solid laminated or painted panels.



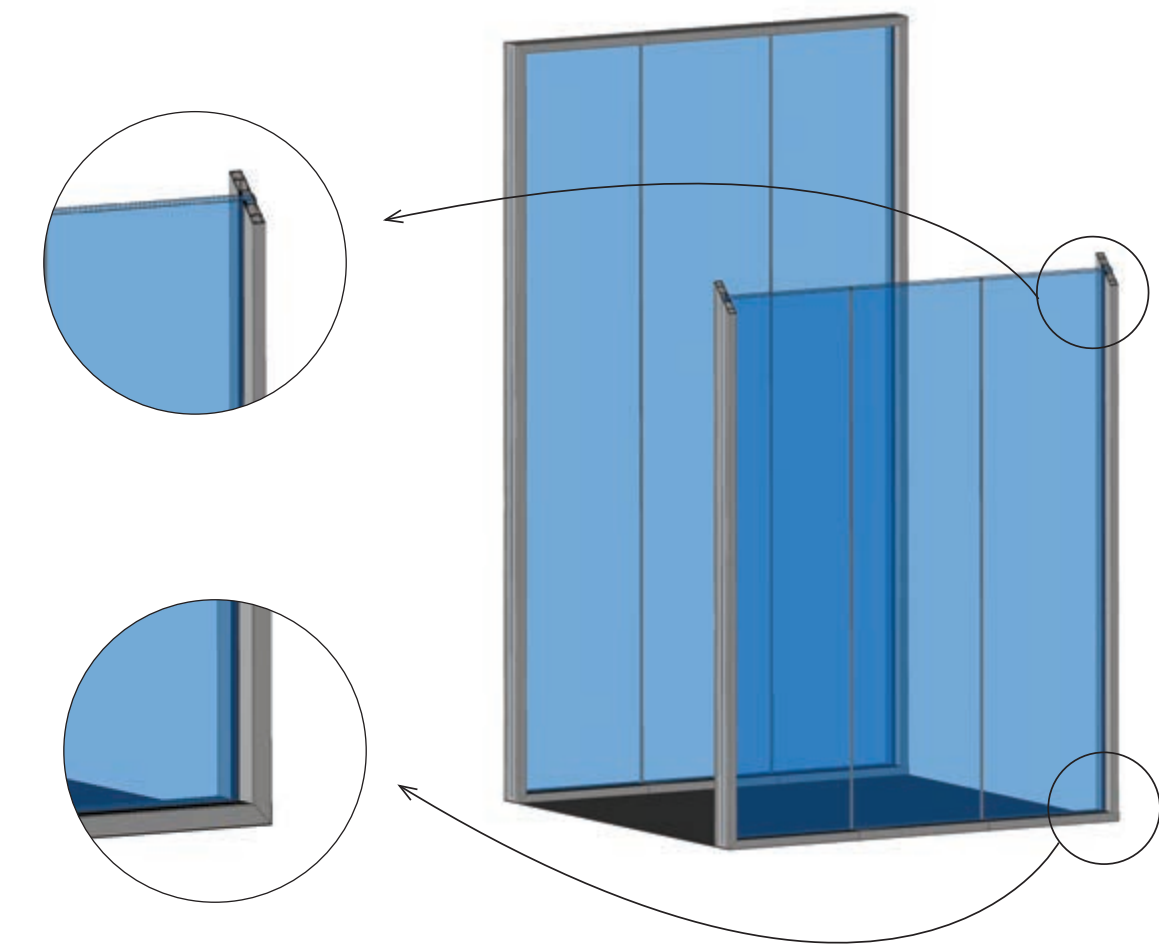


INTACT 95 SG - Single Glass



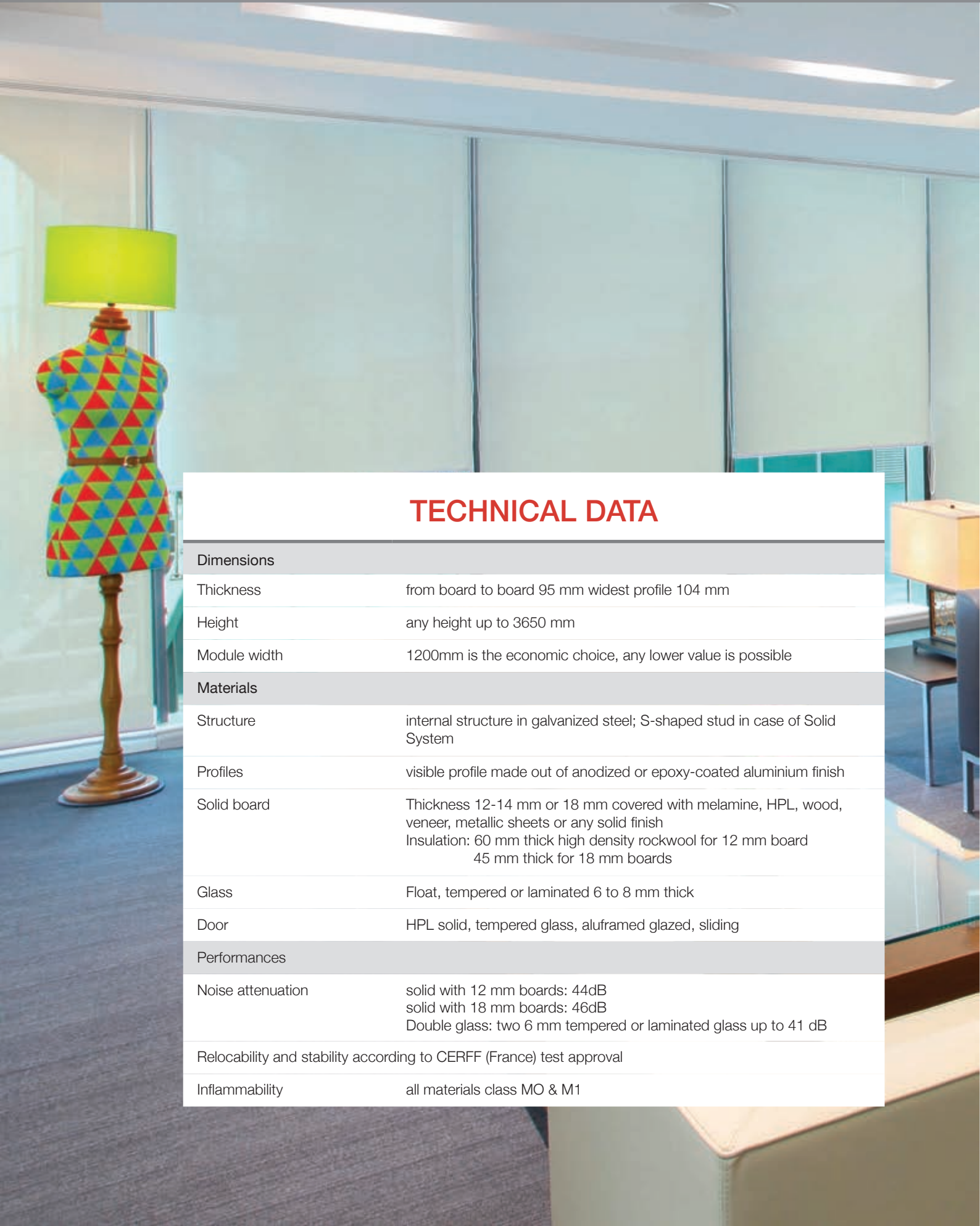
TECHNICAL DATA

The glass is installed in the middle of the profile.	
Dimensions	
Thickness	104 mm
Height	Max 3000 mm
Module width	600 to 1000 mm (recommended)
Materials	
Structure	glass to glass joint in PVC transparent profile
Profiles	made of anodized or epoxy coated aluminium finish
Glass	one glass tempered or laminated 6 to 8 mm thick
Door	tempered glass, aluframed glazed, wooden, sliding, or pivot operated
Performances	
Noise attenuation	up to 38 dB
100% Relocatable and Stability according to CERFF (France) test approval	



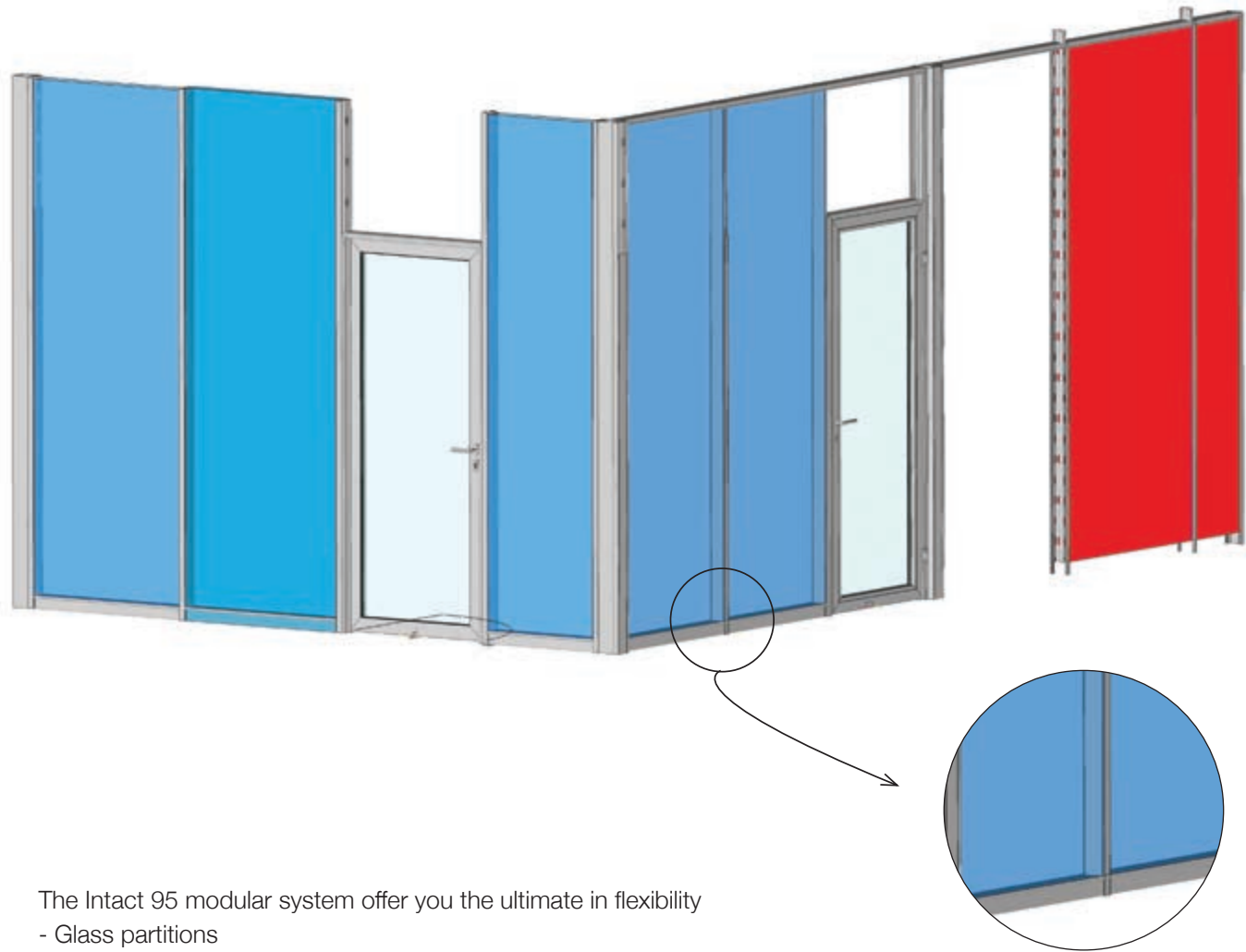


INTACT 95 Double glazed or Solid systems



TECHNICAL DATA

Dimensions	
Thickness	from board to board 95 mm widest profile 104 mm
Height	any height up to 3650 mm
Module width	1200mm is the economic choice, any lower value is possible
Materials	
Structure	internal structure in galvanized steel; S-shaped stud in case of Solid System
Profiles	visible profile made out of anodized or epoxy-coated aluminium finish
Solid board	Thickness 12-14 mm or 18 mm covered with melamine, HPL, wood, veneer, metallic sheets or any solid finish Insulation: 60 mm thick high density rockwool for 12 mm board 45 mm thick for 18 mm boards
Glass	Float, tempered or laminated 6 to 8 mm thick
Door	HPL solid, tempered glass, aluframed glazed, sliding
Performances	
Noise attenuation	solid with 12 mm boards: 44dB solid with 18 mm boards: 46dB Double glass: two 6 mm tempered or laminated glass up to 41 dB
Relocability and stability according to CERFF (France) test approval	
Inflammability	all materials class MO & M1



The Intact 95 modular system offer you the ultimate in flexibility

- Glass partitions
- Solid partitions
- Half glass partitions - half solid partitions.

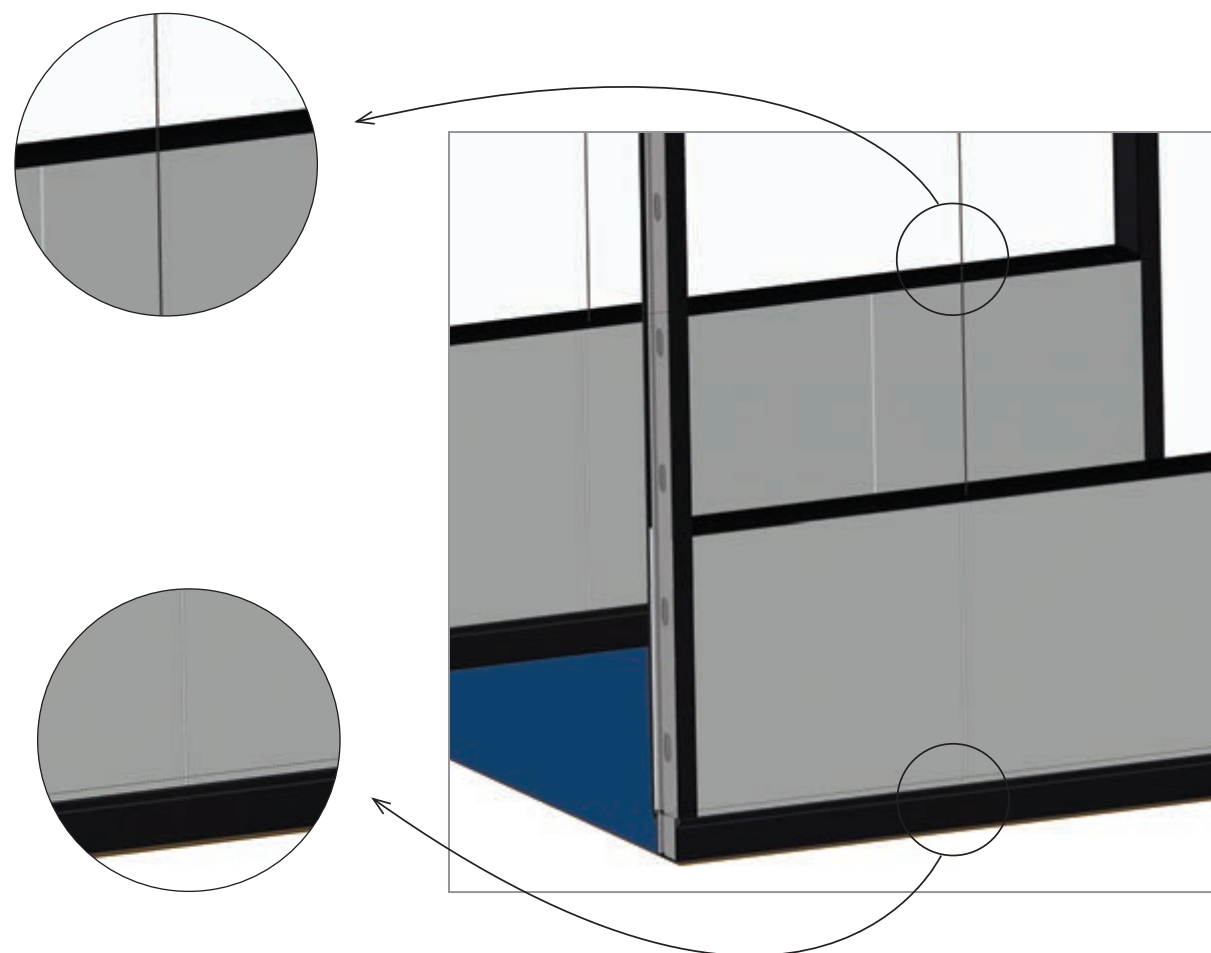




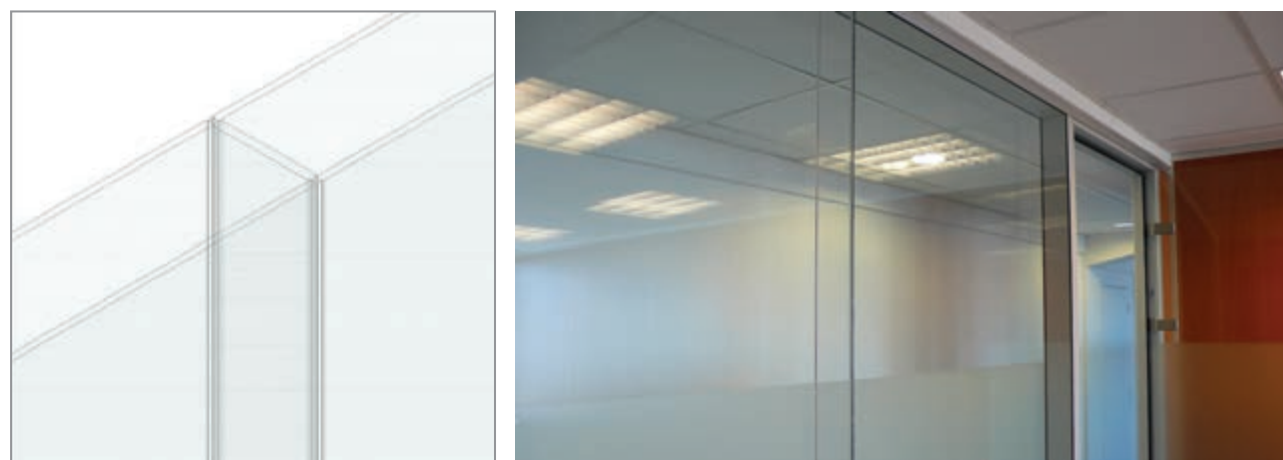
To ensure the aesthetic of the partitions we offer different type of finishes to assemble your modules SL – P – F.

## INTACT 95 SL Shadow line type

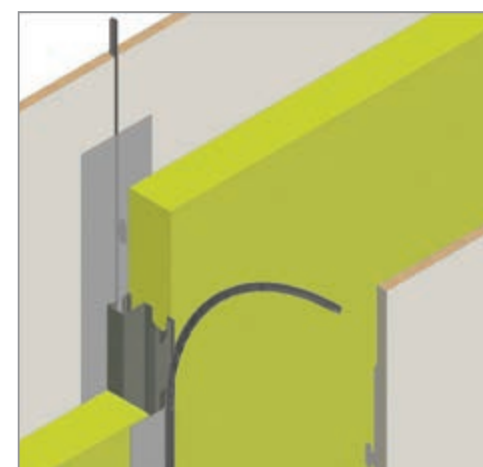
The shadow line system shows no joins between modules.  
The gravity hung panels makes on-site construction and relocation easy.  
Gap between panels, pre-set at 3mm may vary.



## Glass partition Transparent seal



## Solid partition Edge to edge without transparent joints



The gap between panels is pre-set at 3 mm.  
It can be extended. Panels will be on wood material.  
Long sides of panels require perfect finish: pvc for particle boards, clear cut for MDF.

## Way of assembling the modules



Hunging panels has never been so easy



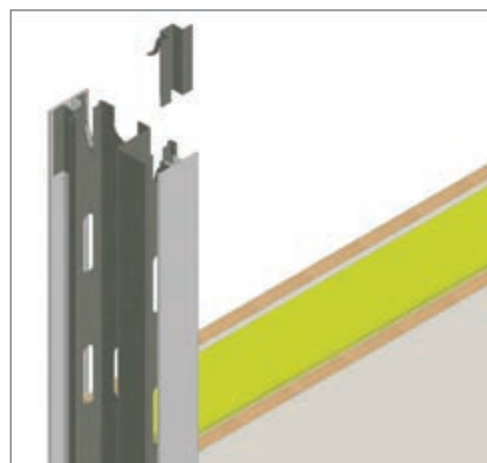
95 SL system requires clear cut of panels and edge pvc covering.  
Studs may be equipped with height adjustment device



## INTACT 95 P

### Solid Partition with flush and flat aluminium profile

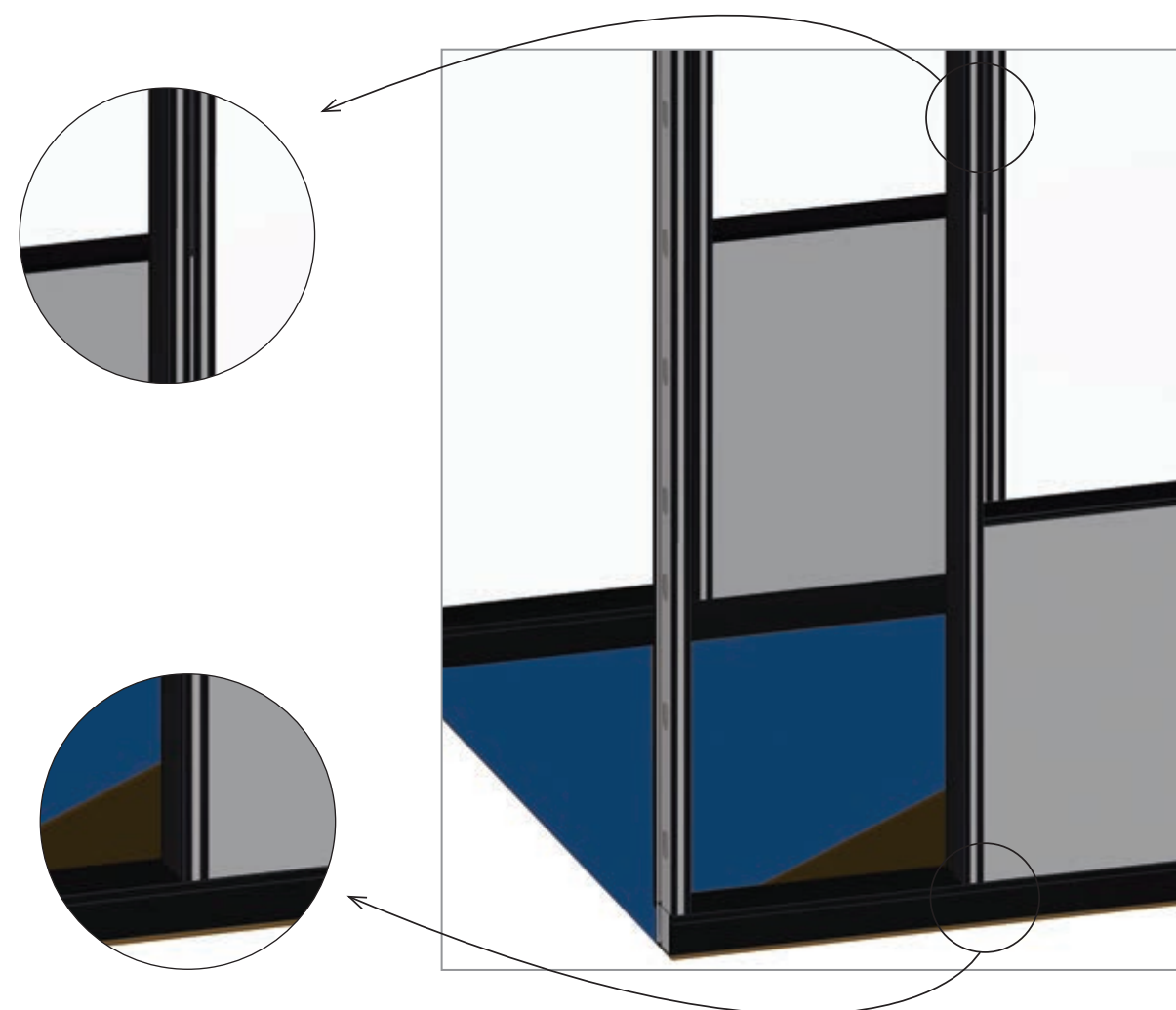
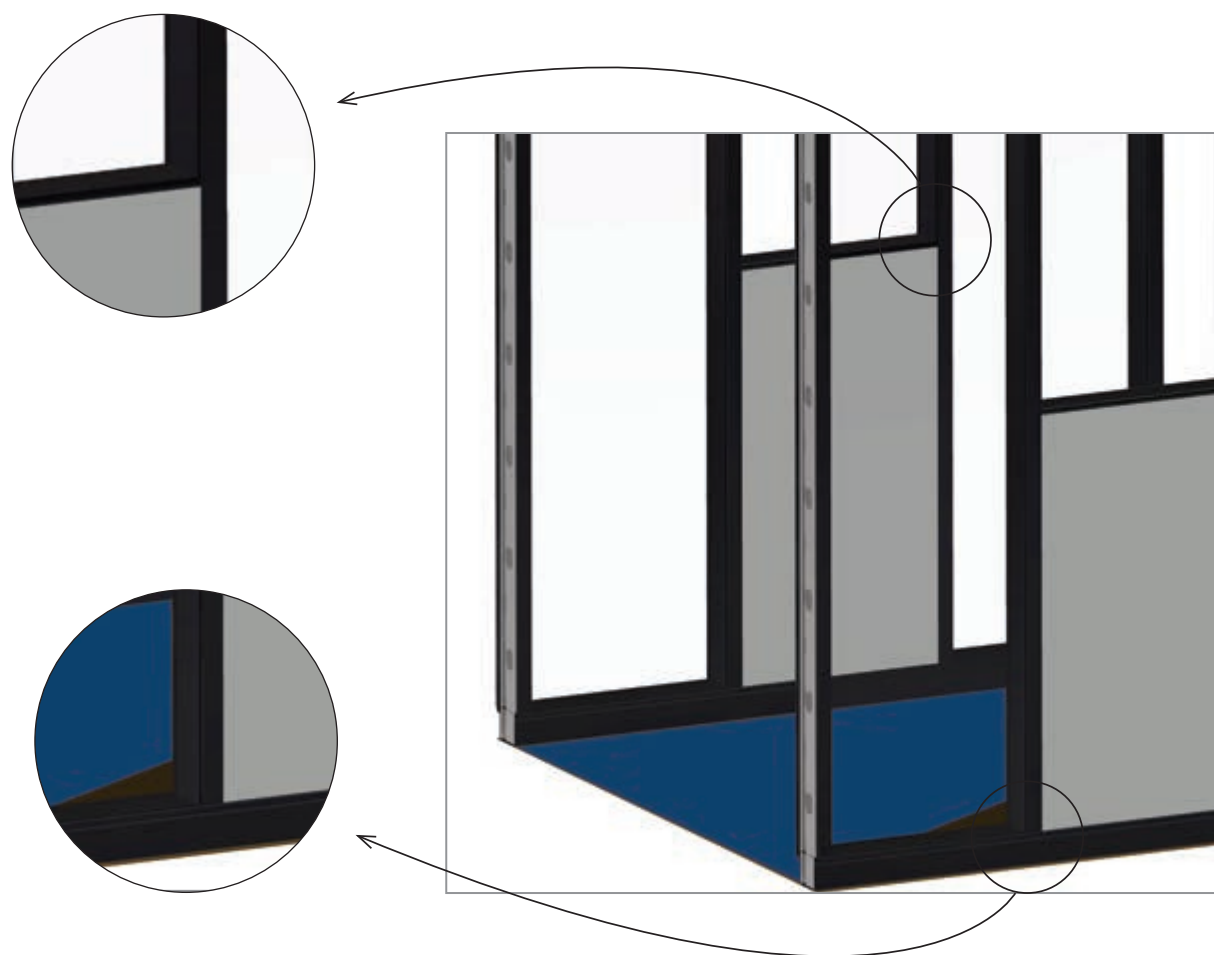
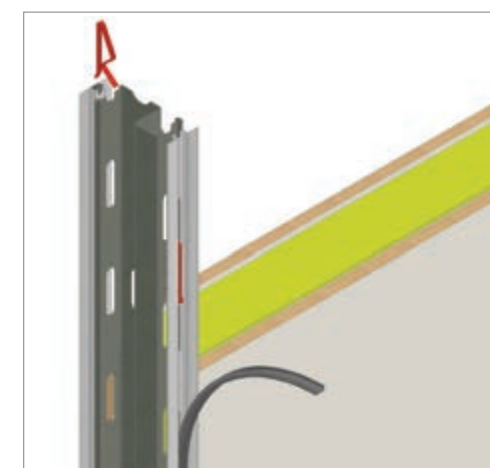
- Multipurpose concept matching various architectural concepts
- The straight way to creative and innovating partitioning
- Easy and quick to install



## INTACT 95 F

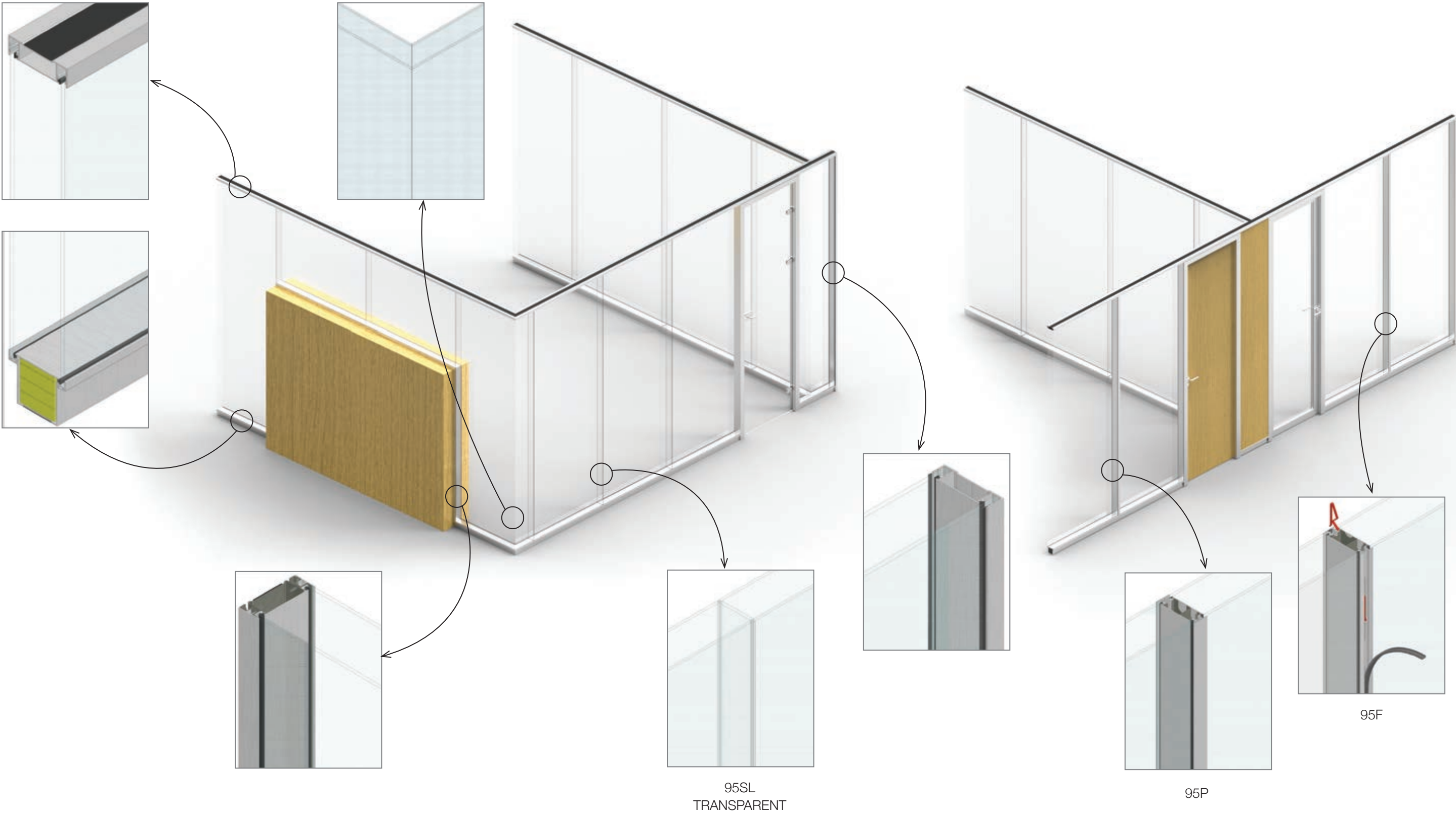
### Solid Partition with flush moulding aluminium profile of omega-shape. The clips are covered by a pvc profiles of matching colour.

- Traditional flush omega system
- The perfect flexibility, re-usability and relocatability
- The ultimate partition in industrial application





PARTITION LAYOUT





# INTACT 120 PARTITION

## INTACT 120 Double glazed or Solid systems



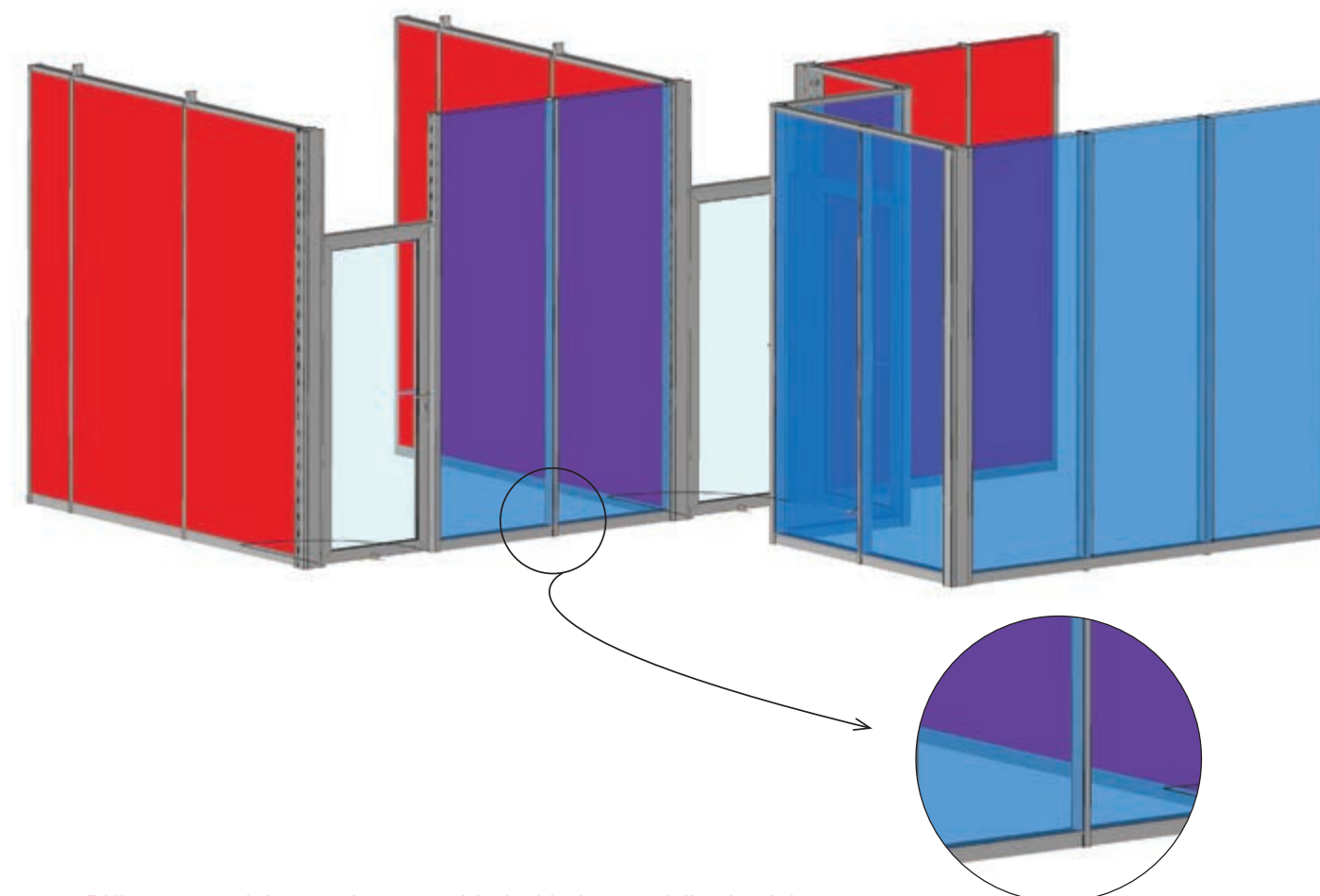
### TECHNICAL DATA

Dimensions	
Thickness	from board to board 115 mm; widest profile 132 mm
Height	up to 15 m
Module width	1200mm is the economic choice any lower value is possible
Materials	
Structure	internal structure in galvanized steel; S-shaped stud
Profiles	visible profiles made out of anodized or epoxy aluminium finish
Solid board	Thickness 12-14 mm or 18 mm covered with melamine, vinyl, HPL, wood veneer, steel sheets Insulation: 60 mm thick high density rockwool for 12 mm board 45 mm thick for 18 mm boards
Glass	Float, tempered or laminated 4 to 8 mm thick
Door	HPL solid, tempered glass, aluframed glazed

## The ultimate solution for high partitioning

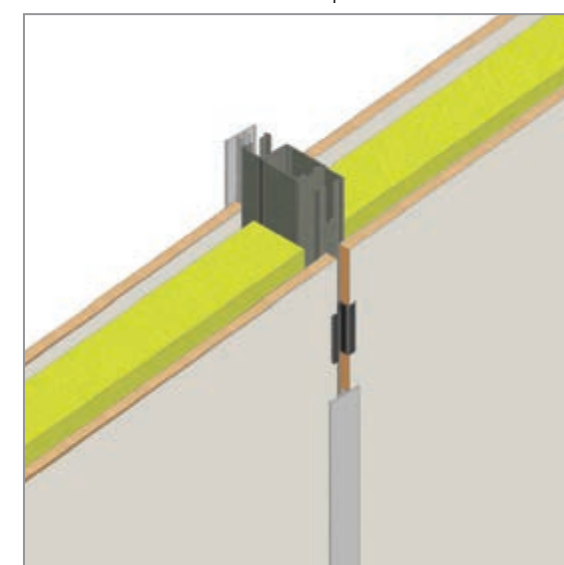
The INTACT 120 is specially designed for industrial hall, building entrance, airports as this partition is designed to fit to ceilings exceeding 4 m; with a maximum of 15 m.

The exceptional strength and stability are achieved by a cluster arrangement of two S-studs for structure and by a 120-width profile.

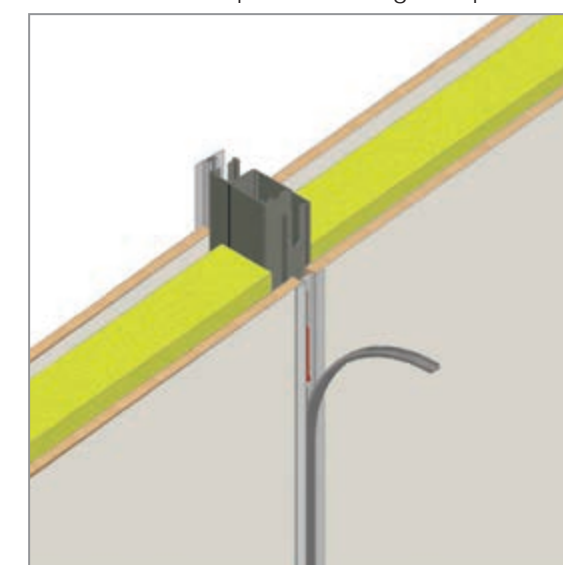


Different modules can be assembled with the two following joints :

120 P - Solid Partition with flush and flat aluminium profile



120 F - Solid Partition with flush moulding aluminium profile of omega-shape





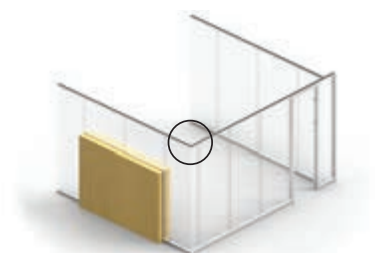
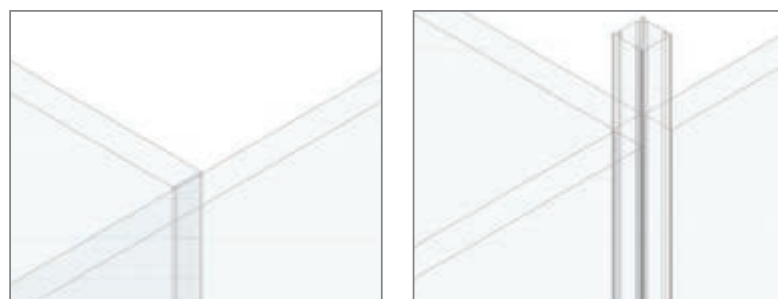
# JUNCTIONS

## 38 SG and 95 SG Partition

### L Junctions (Corners)



### T Junctions (Perpendiculars)

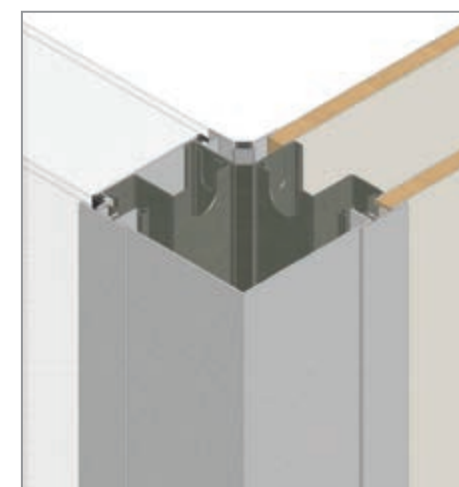


## 95 and 120 Partition

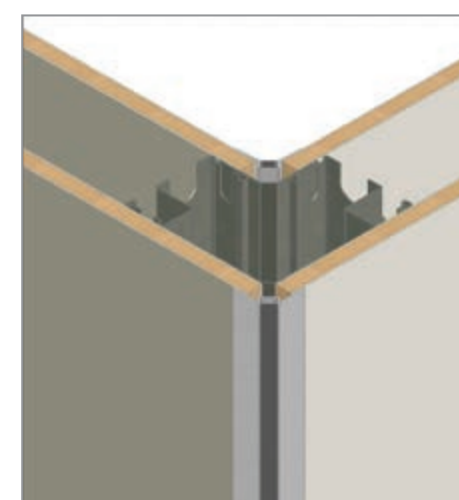
### L Junctions (Corners)



90° to 135° adjustable corner post



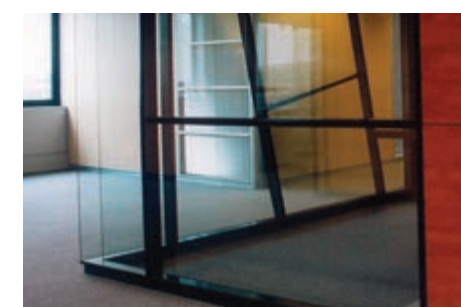
90° square corner post



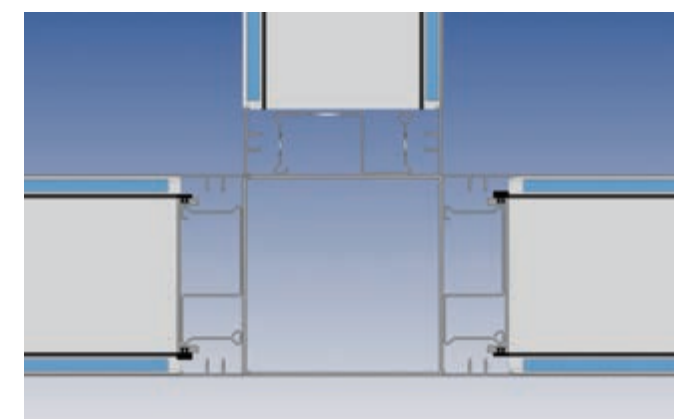
90° integrating discreet profiles



Clear glass corner



### T Junctions (Perpendiculars)





# Doorframes

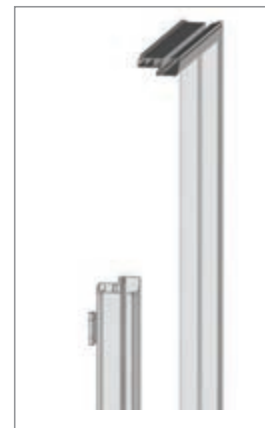
## 38 SG Partition

DFC Doorframe



## 95 and 120 Partition

DFA 160 Doorframe



DFA 195 Doorframe







DOORS



## Aluminium framed glazed doors



## Wooden doors



## Tempered glass door







#### EUROPE

INTACT LIFE SA  
Rue de la Wastinne 24 • B-1301 Wavre • Belgium  
Phone Number: +32 (0)2 366 06 56

#### U.A.E

INTACT LIFE FZE  
P.O. BOX 16766  
JAFZA, Dubai, U.A.E.  
Phone Number: +971 4 8886224

#### INDIA

INTACT Interiors PVT LTD  
1st Floor, Number 2, 7th Main, 80ft Road, 1st Block, Koramangala,  
BANGALORE -560 034, Karnataka, India  
Phone Number: +91 80 414 68558

**INTACT** *life* 

Relocatable office partitions

[www.intactlife.net](http://www.intactlife.net)